

Newin Company, Inc.

Presents...

a world of Spherical Plain Bearing Technology...



377 South Lemon Avenue

Suite D

Walnut, CA 91789 USA

Phone: 609-268-6706

Fax: 609-268-3342

Email: rdinsmore@newincompany.com

Contained in this brochure

Inch Series

Metal to Metal

- *Standard*
- *Wide Inner Ring:*

Maintenance Free

Metric Series

Metal to Metal

- *Standard*
- *Heavy Duty*

Maintenance Free

Interchange Chart

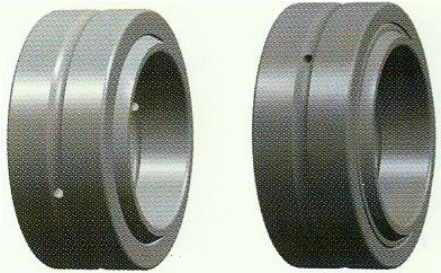
Complete Engineering Data including:

tolerancing, press fitting, radial clearances etc, available upon request

EXTRA LARGE SPHERICAL PLAIN BEARINGS WITH BORES TO 12"

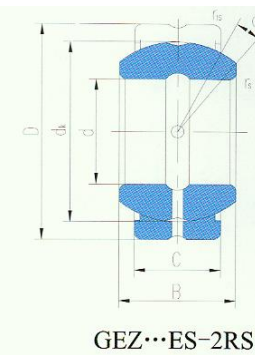
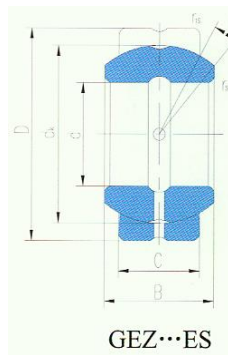
Spherical Plain Radial Bearings—

Standard - Inch Series



Bores to 12 Inches

Steel on Steel design



Dimension Legend:
 d: ID (bore)
 D: OD
 B: Inner Ring Width
 C: Outer ring Width

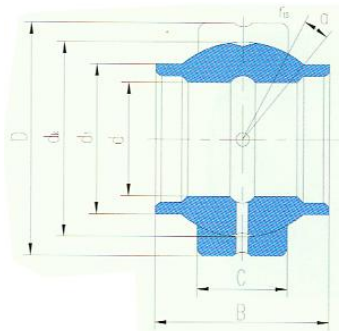
Bearing No.		Dimensions in inches					Load Ratings		∠ a°	Wt. (lbs.)
unsealed	sealed 2 sides	d	D	B	C	d ₁ (min)	Dynamic (P-F)	Static (P-F)		
GEZ12ES		0.500	0.875	0.437	0.375	0.555	2,922	9,217	6	0.485
GEZ15ES		0.625	1.063	0.547	0.469	0.720	4,945	14,612	6	0.079
GEZ19ES		0.750	1.250	0.656	0.562	0.858	6,969	21,357	6	0.117
GEZ22ES		0.875	1.438	0.765	0.656	1.000	9,442	28,550	6	0.187
GEZ25ES	GEZ25ES-2RS	1.000	1.625	0.875	0.750	1.086	12,589	37,318	6	0.266
GEZ31ES	GEZ31ES-2RS	1.250	2.000	1.093	0.937	1.417	19,334	58,450	6	0.511
GEZ34ES	GEZ34ES-2RS	1.375	2.188	1.187	1.031	1.520	22,931	69,691	6	0.774
GEZ38ES	GEZ38ES-2RS	1.500	2.438	1.312	1.125	1.622	28,101	84,303	6	0.930
GEZ44ES	GEZ44ES-2RS	1.750	2.813	1.531	1.312	1.996	38,218	114,653	6	1.413
GEZ50ES	GEZ50ES-2RS	2.000	3.188	1.750	1.500	2.279	50,357	150,622	6	2.055
GEZ57ES	GEZ57ES-2RS	2.250	3.563	1.969	1.687	2.555	62,946	191,088	6	2.932
GEZ63ES	GEZ63ES-2RS	2.500	3.938	2.187	1.875	2.885	79,807	238,297	6	4.079
GEZ69ES	GEZ69ES-2RS	2.750	4.375	2.406	2.062	3.114	93,296	281,011	6	5.335
GEZ76ES	GEZ76ES-2RS	3.000	4.750	2.625	2.250	3.417	112,404	337,213	6	6.834
GEZ82ES	GEZ82ES-2RS	3.250	5.125	2.844	2.437	3.720	131,513	395,664	6	8.422
GEZ88ES	GEZ88ES-2RS	3.500	5.500	3.062	2.625	4.000	152,870	458,610	6	10.560
GEZ95ES	GEZ95ES-2RS	3.750	5.875	3.281	2.812	4.279	175,351	530,549	6	12.743
GEZ101ES	GEZ101ES-2RS	4.000	6.250	3.500	3.000	4.559	202,328	595,744	6	15.410
GEZ107ES	GEZ107ES-2RS	4.250	6.625	3.719	3.187	4.834	224,809	674,427	6	18.541
GEZ114ES	GEZ114ES-2RS	4.500	7.000	3.938	3.375	5.141	251,786	764,350	6	21.583
GEZ120ES	GEZ120ES-2RS	4.750	7.375	4.156	3.562	5.417	281,011	843,033	6	25.353
GEZ127ES	GEZ127ES-2RS	5.000	7.750	4.375	3.750	5.720	314,732	932,957	6	29.762
GEZ152ES	GEZ152ES-2RS	6.000	8.750	4.750	4.125	6.622	388,919	1,169,006	5	38.581

Larger sizes available through 18" OD w/ 12" bore

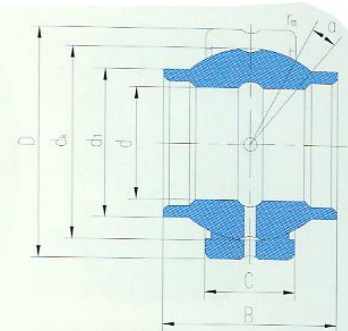
Spherical Plain Radial Bearings—
Wide Inner Ring—Inch Series



Steel on Steel design



GEWZ...ES



GEWZ...ES-2RS

Dimension Legend:

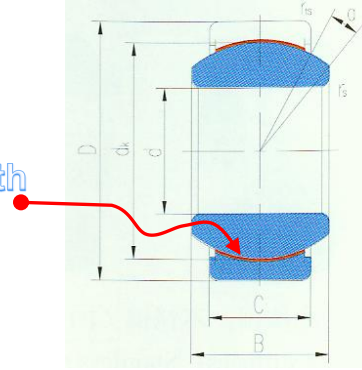
- d: ID (bore)
- D: OD
- B: Inner Ring Width
- C: Outer ring Width

Bearing Nos.		Dimensions in inches					Load Ratings		∠ a°	Weight (lbs.)
Unsealed	Sealed 2 sides	d	D	B	C	d ₁ (min)	Dynamic (P-F)	Static (P-F)		
GEWZ12ES		0.500	0.875	0.750	0.375	0.625	2,923	9,217	5	0.053
GEWZ15ES		0.625	1.063	0.937	0.469	0.780	4,946	14,613	5	0.084
GEWZ19ES		0.750	1.250	1.125	0.562	0.920	6,969	21,357	5	0.141
GEWZ22ES		0.875	1.438	1.312	0.656	1.070	9,442	28,551	5	0.216
GEWZ25ES	GEWZ25ES - 2RS	1.000	1.625	1.500	0.750	1.220	12,589	37,318	5	0.313
GEWZ31ES	GEWZ31ES - 2RS	1.250	2.000	1.875	0.937	1.525	19,334	58,450	5	0.597
GEWZ34ES	GEWZ34ES - 2RS	1.375	2.188	2.062	1.031	1.670	22,931	69,691	5	0.822
GEWZ38ES	GEWZ38ES - 2RS	1.500	2.438	2.250	1.125	1.850	28,101	84,303	5	1.089
GEWZ44ES	GEWZ44ES - 2RS	1.750	2.813	2.625	1.312	2.165	38,218	114,653	5	1.680
GEWZ50ES	GEWZ50ES - 2RS	2.000	3.188	3.000	1.500	2.460	50,357	150,622	5	2.447
GEWZ57ES	GEWZ57ES - 2RS	2.250	3.563	3.375	1.687	2.760	62,946	191,088	5	3.461
GEWZ63ES	GEWZ63ES - 2RS	2.500	3.938	3.750	1.875	3.060	79,807	238,297	5	4.740
GEWZ69ES	GEWZ69ES - 2RS	2.750	4.375	4.125	2.062	3.380	93,296	281,011	5	6.393
GEWZ76ES	GEWZ76ES - 2RS	3.000	4.750	4.500	2.250	3.675	112,404	337,213	5	7.915
GEWZ82ES	GEWZ82ES - 2RS	3.250	5.125	4.875	2.437	3.985	131,513	395,664	5	10.340
GEWZ88ES	GEWZ88ES - 2RS	3.500	5.500	5.250	2.625	4.300	152,870	458,610	5	12.919
GEWZ95ES	GEWZ95ES - 2RS	3.750	5.875	5.625	2.812	4.590	175,351	530,549	5	15.675
GEWZ101ES	GEWZ101ES - 2RS	4.000	6.250	6.000	3.000	4.905	202,328	595,744	5	18.872
GEWZ114ES	GEWZ114ES - 2RS	4.500	7.000	6.750	3.375	5.525	251,786	764,350	5	26.985
GEWZ127ES	GEWZ127ES - 2RS	5.000	7.750	7.500	3.750	6.130	314,732	932,957	5	36.663
GEWZ152ES	GEWZ152ES - 2RS	6.000	8.750	8.250	4.125	7.020	388,919	1,169,006	5	45.636

Spherical Plain Radial Bearings — Maintenance Free — Inch Series



Outer Ring Lined with
PTFE Fabric



Dimension Legend:

d: ID (bore)

D: OD

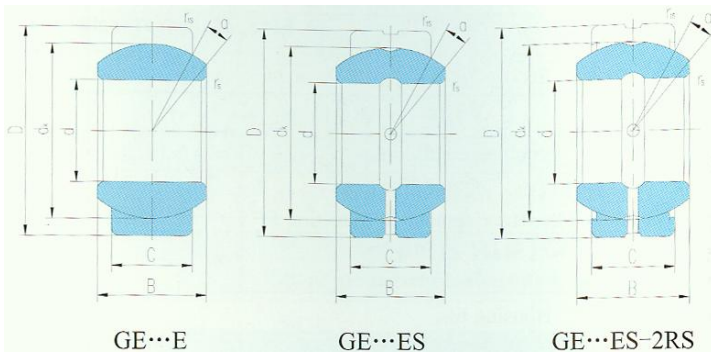
B: Inner Ring Width

C: Outer ring Width

Steel on PTFE design

Bearing No. Sealed 2 sides	Dimensions in inches					Load Ratings		∠ a°	Weight (lbs.)
	d	D	B	C	d ₁ (min)	Dynamic (P-F)	Static (P-F)		
GEZ25ET - 2RS	1.000	1.625	0.875	0.750	1.087	18,210	36,644	6	0.267
GEZ31ET - 2RS	1.250	2.000	1.093	0.937	1.417	29,225	58,900	6	0.511
GEZ34ET - 2RS	1.375	2.188	1.187	1.031	1.520	34,621	69,691	6	0.774
GEZ38ET - 2RS	1.500	2.438	1.312	1.125	1.622	40,690	82,280	6	0.930
GEZ44ET - 2RS	1.750	2.813	1.531	1.312	1.996	57,326	115,777	6	1.413
GEZ50ET - 2RS	2.000	3.188	1.750	1.500	2.280	75,086	150,622	6	2.055
GEZ57ET - 2RS	2.250	3.563	1.969	1.687	2.555	94,645	191,088	6	2.932
GEZ63ET - 2RS	2.500	3.938	2.187	1.875	2.886	118,025	238,297	6	4.079
GEZ69ET - 2RS	2.750	4.375	2.406	2.062	3.114	141,180	284,833	6	5.335
GEZ76ET - 2RS	3.000	4.750	2.625	2.250	3.417	168,831	340,361	6	6.834
GEZ82ET - 2RS	3.250	5.125	2.844	2.437	3.720	198,731	400,160	6	8.422
GEZ88ET - 2RS	3.500	5.500	3.062	2.625	4.000	230,204	464,230	6	10.560
GEZ95ET - 2RS	3.750	5.875	3.281	2.812	4.280	263,026	532,347	6	12.743
GEZ101ET - 2RS	4.000	6.250	3.500	3.000	4.559	300,120	604,736	6	15.410
GEZ107ET - 2RS	4.250	6.625	3.719	3.187	4.835	337,213	681,171	6	18.541
GEZ114ET - 2RS	4.500	7.000	3.938	3.375	5.142	379,927	764,350	6	21.583
GEZ120ET - 2RS	4.750	7.375	4.156	3.562	5.417	422,641	852,026	6	25.353
GEZ127ET - 2RS	5.000	7.750	4.375	3.750	5.720	469,851	946,445	6	29.762
GEZ152ET - 2RS	6.000	8.750	4.750	4.125	6.622	584,503	1,177,999	5	38.581

Spherical Plain Radial Bearings— Standard - Metric Series



Dimension Nomenclature
 d: ID (bore)
 D: OD
 B: Inner Ring Width
 C: Outer ring Width

Bores to 460mm

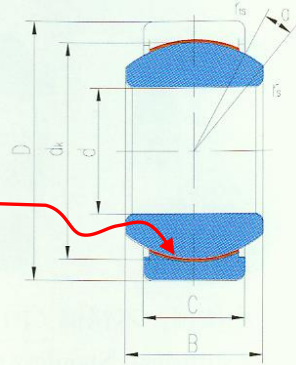
**Steel on Steel
design**

Bearing No.		Dimensions in mm					Load Ratings		∠ a°	Wt. (lbs.)
unsealed	sealed 2 sides	d	D	B	C	d1(min)	Dynamic (P-F)	Static (P-F)		
GE4E		4	12	5	3	6	450	2,248	16	0.01
GE5E		5	14	6	4	8	764	3,822	13	0.01
GE6E		6	14	6	4	8	764	3,822	13	0.01
GE8E		8	16	8	5	10	1,236	6,070	15	0.02
GE10E		10	19	9	6	13	1,821	8,992	12	0.02
GE12E		12	22	10	7	15	2,248	11,915	10	0.03
GE15ES	GE15ES-2RS	15	26	12	9	18	3,597	18,884	8	0.06
GE17ES	GE17ES-2RS	17	30	14	10	20	4,721	23,830	10	0.09
GE20ES	GE20ES-2RS	20	35	16	12	24	6,744	32,822	9	0.15
GE25ES	GE25ES-2RS	25	42	20	16	29	10,791	53,954	7	0.26
GE30ES	GE30ES-2RS	30	47	22	18	34	13,938	69,691	6	0.34
GE35ES	GE35ES-2RS	35	55	25	20	39	17,760	89,699	6	0.51
GE40ES	GE40ES-2RS	40	62	28	22	45	22,256	111,280	7	0.67
GE45ES	GE45ES-2RS	45	68	32	25	50	28,551	143,203	7	0.94
GE50ES	GE50ES-2RS	50	75	35	28	55	35,070	175,351	6	1.20
GE60ES	GE60ES-2RS	60	90	44	36	66	55,078	274,267	6	2.29
GE70ES	GE70ES-2RS	70	105	49	40	77	70,365	350,702	6	3.42
GE80ES	GE80ES-2RS	80	120	55	45	88	89,924	449,618	6	5.09
GE90ES	GE90ES-2RS	90	130	60	50	98	109,707	548,534	5	6.06
GE100ES	GE100ES-2RS	100	150	70	55	109	136,459	681,171	7	9.81
GE110ES	GE110ES-2RS	110	160	70	55	120	147,025	735,125	6	10.63
GE120ES	GE120ES-2RS	120	180	85	70	130	213,568	1,067,842	6	17.75
GE140ES	GE140ES-2RS	140	210	90	70	150	240,546	1,203,852	7	24.29
GE160ES	GE160ES-2RS	160	230	105	80	170	305,740	1,528,701	8	30.89
GE180ES	GE180ES-2RS	180	260	105	80	192	343,958	1,719,788	6	41.12
GE200ES	GE200ES-2RS	200	290	130	100	212	476,595	2,382,974	7	61.80
GE220ES	GE220ES-2RS	220	320	135	100	238	521,557	2,607,783	8	78.29
GE240ES	GE240ES-2RS	240	340	140	100	265	573,263	2,855,073	8	87.99
GE260ES	GE260ES-2RS	260	370	150	110	285	682,969	3,414,847	7	113.63
GE280ES	GE280ES-2RS	280	400	155	120	310	802,568	4,012,839	6	143.43
GE300ES	GE300ES-2RS	300	430	165	120	330	854,274	4,293,850	7	172.12

Spherical Plain Radial Bearings — Maintenance Free — Metric Series



Outer Ring Lined with
PTFE Fabric



Dimension Legend:

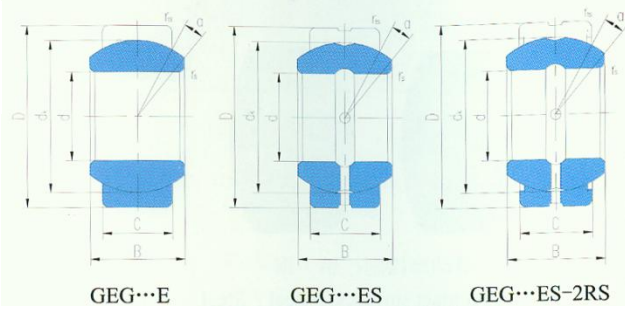
- d: ID (bore)
- D: OD
- B: Inner Ring Width
- C: Outer ring Width

Steel on PTFE design

Bearing No.	Dimensions in mm					Load Ratings		α°	Wt. (lbs.)
	d	D	B	C	d_k	Dynamic (P-F)	Static (P-F)		
GE4C	4	12	5	3	8	472	1,214	16	0.01
GE5C	5	14	6	4	10	809	2,046	13	0.01
GE6C	6	14	6	4	10	809	2,046	13	0.01
GE8C	8	16	8	5	13	1,304	3,147	15	0.02
GE10C	10	19	9	6	16	1,933	4,721	12	0.02
GE12C	12	22	10	7	18	2,473	6,294	10	0.04
GE15C	15	26	12	9	22	4,046	10,116	8	0.06
GE17C	17	30	14	10	25	4,946	12,589	10	0.09
GE20C	20	35	16	12	29	6,969	17,534	9	0.14
GE25C	25	42	20	16	35.5	11,465	28,550	7	0.25
GE30C	30	47	22	18	40.7	14,612	37,317	6	0.33
GE35C	35	55	25	20	47	18,883	47,433	6	0.50
GE40C	40	62	28	22	53	23,379	58,898	7	0.70
GE45C	45	68	32	25	60	30,348	75,758	7	0.93
GE50C	50	75	35	28	66	37,317	93,292	6	1.24
GEG4C	4	14	7	4	10	809	2,046	20	0.01
GEG5C	5	16	9	5	13	1,304	3,147	21	0.02
GEG6C	6	16	9	5	13	1,304	3,147	21	0.01
GEG8C	8	19	11	6	16	1,933	4,721	21	0.03
GEG10C	10	22	12	7	18	2,473	6,294	18	0.05
GEG12C	12	26	15	9	22	4,046	10,116	18	0.07
GEG15C	15	30	16	10	25	4,946	12,589	16	0.11
GEG17C	17	35	20	12	29	6,969	17,534	19	0.18
GEG20C	20	42	25	16	35.5	11,465	28,550	17	0.34
GEG25C	25	47	28	18	40.7	14,612	37,317	17	0.45
GEG30C	30	55	32	20	47	18,883	47,433	17	0.67
GEG35C	35	62	35	22	53	23,379	58,898	16	0.90
GEG40C	40	68	40	25	60	30,348	75,758	17	1.19
GEG45C	45	75	43	28	66	37,317	93,292	15	1.57

Spherical Plain Radial Bearings—

Heavy Duty - Metric Series



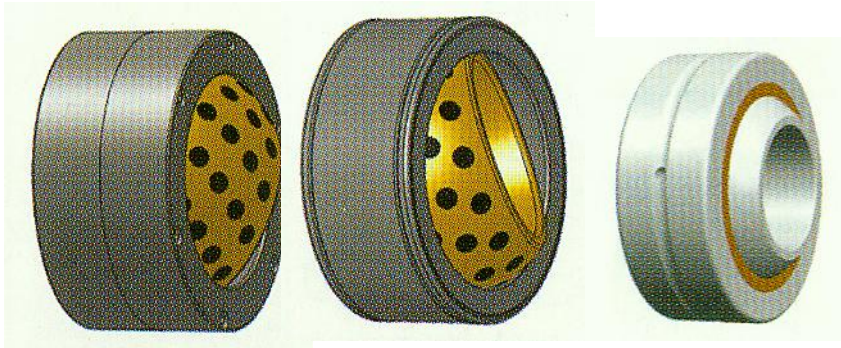
Dimension Nomenclature

- d: ID (bore)
- D: OD
- B: Inner Ring Width
- C: Outer ring Width

Steel on Steel design

Bearing No.		Dimensions in mm					Load Ratings		α°	Wt. (lbs.)
unsealed	sealed 2 sides	d	D	B	C	dk	Dynamic (P-F)	Static (P-F)		
GEG4E		4	14	7	4	10	764	3,822	20	0.01
GE5E		5	16	9	5	13	1,237	6,070	21	0.02
GEG6E		6	16	9	5	13	1,237	6,070	21	0.02
GEG8E		8	19	11	6	16	1,821	8,993	21	0.03
GEG10E		10	22	12	7	18	2,248	11,915	18	0.05
GEG12E		12	26	15	9	22	3,597	18,885	18	0.08
GEG15ES	GEG15ES-2RS	15	30	16	10	25	4,721	23,831	16	0.11
GEG17ES	GEG17ES-2RS	17	35	20	12	29	6,745	32,824	19	0.18
GEG20ES	GEG20ES-2RS	20	42	25	16	35.5	10,791	53,957	17	0.33
GEG25ES	GEG25ES-2RS	25	47	28	18	40.7	13,939	69,694	17	0.44
GEG30ES	GEG30ES-2RS	30	55	32	20	47	17,761	89,703	17	0.65
GEG35ES	GEG35ES-2RS	35	62	35	22	53	22,257	111,286	16	0.88
GEG40ES	GEG40ES-2RS	40	68	40	25	60	28,552	143,210	17	1.2
GEG45ES	GEG45ES-2RS	45	75	43	28	66	35,072	175,360	15	1.5
GEG50ES	GEG50ES-2RS	50	90	56	36	80	55,081	274,280	17	3.1
GEG60ES	GEG60ES-2RS	60	105	63	40	92	70,369	350,719	17	4.6
GEG70ES	GEG70ES-2RS	70	120	70	45	105	89,928	449,640	16	6.6
GEG80ES	GEG80ES-2RS	80	130	75	50	115	109,712	548,561	14	8
GEG90ES	GEG90ES-2RS	90	150	85	55	130	136,466	681,205	15	12
GEG100ES	GEG100ES-2RS	100	160	85	55	140	147,032	735,161	14	13
GEG110ES	GEG110ES-2RS	110	180	100	70	160	213,579	1,067,895	12	21
GEG120ES	GEG120ES-2RS	120	210	115	70	180	240,557	1,202,787	16	33
GEG140ES	GEG140ES-2RS	140	230	130	80	200	305,755	1,528,776	16	42
GEG160ES	GEG160ES-2RS	160	260	135	80	225	343,975	1,719,873	16	55
GEG180ES	GEG180ES-2RS	180	290	155	100	250	476,618	2,383,092	14	79
GEG200ES	GEG200ES-2RS	200	320	165	100	275	521,582	2,607,912	15	99
GEG220ES	GEG220ES-2RS	220	340	175	100	300	573,291	2,855,214	16	112
GEG240ES	GEG240ES-2RS	240	370	190	110	325	681,205	3,415,016	15	143
GEG260ES	GEG260ES-2RS	260	400	205	120	350	802,607	4,013,037	15	180
GEG280ES	GEG280ES-2RS	280	430	210	120	375	854,316	4,294,062	15	212

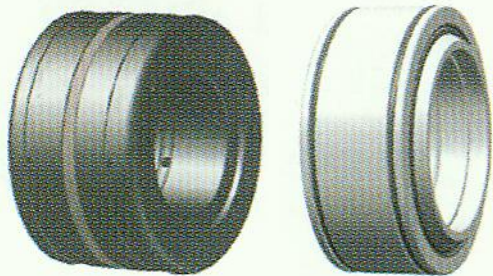
Numerous other designs also available



Copper Alloy and Bronze Lined Bearings



Offering Complete Line of
Angular Contact Bearings



Double Axially Split Bearings
and Custom Manufactured Specials

EXTRA LARGE SPHERICAL PLAIN BEARINGS WITH BORES TO 12"

CROSS REFERENCE GUIDE

Inch Series - Split				
Newin Co.	RBC	Torrington	IKO	SKF
GEZ 12 ES	B8-L	3 SF 8	SBB 8	GEZ 8 ES
GEZ 15 ES	B10-L	6 SF 10	SBB 10	GEZ 10 ES
GEZ 19 ES	B12-L	7 SF 12	SBB 12	GEZ 12 ES
GEZ 22 ES	B14-L	8 SF 14	SBB 14	GEZ 14 ES
GEZ 25 ES	B16-L	10 SF 16	SBB 16	GEZ 100 ES
GEZ 31 ES	B20-L	12 SF 20	SBB 20	GEZ 104 ES
GEZ 34 ES	B22-L	13 SF 22	SBB 22	GEZ 106 ES
GEZ 38 ES	B24-L	15 SF 24	SBB 24	GEZ 108 ES
GEZ 44 ES	B28-L	17 SF 28	SBB 28	GEZ 112 ES
GEZ 50 ES	B32-L	20 SF 32	SBB 32	GEZ 200 ES
GEZ 57 ES	B36-L	22 SF 36	SBB 36	GEZ 204 ES
GEZ 63 ES	B40-L	25 SF 40	SBB 40	GEZ 208 ES
GEZ 69 ES	B44-L	27 SF 44	SBB 44	GEZ 212 ES
GEZ 76 ES	B48-L	30 SF 48	SBB 48	GEZ 300 ES
GEZ 82 ES	B52-L	32 SF 52	SBB 52	GEZ 304 ES
GEZ 88 ES	B56-L	35 SF 56	SBB 56	GEZ 308 ES
GEZ 95 ES	B60-L	37 SF 60	SBB 60	GEZ 312 ES
GEZ 101 ES	B64-L	40 SF 64	SBB 64	GEZ 400 ES
GEZ 114 ES	B72-9L	45 SF 72	SBB 72	GEZ 408 ES
GEZ 127 ES	B80-9L	50 SF 80	SBB 80	GEZ 500 ES
GEZ 152 ES	B96-9L	60 SF 96	SBB 96	GEZ 600 ES

Inch Series - Sealed				
Newin Co.	RBC	Torrington	IKO	SKF
GEZ 25 ES-2RS	B16-LSS	10 SF 16-TT	SBB 16-2RS	GEZ 100 ES-2RS
GEZ 31 ES-2RS	B20-LSS	12 SF 20-TT	SBB 20-2RS	GEZ 104 ES-2RS
GEZ 34 ES-2RS	B22-LSS	13 SF 22-TT	SBB 22-2RS	GEZ 106 ES-2RS
GEZ 38 ES-2RS	B24-LSS	15 SF 24-TT	SBB 24-2RS	GEZ 108 ES-2RS
GEZ 44 ES-2RS	B28-LSS	17 SF 28-TT	SBB 28-2RS	GEZ 112 ES-2RS
GEZ 50 ES-2RS	B32-LSS	20 SF 32-TT	SBB 32-2RS	GEZ 200 ES-2RS
GEZ 57 ES-2RS	B36-LSS	22 SF 36-TT	SBB 36-2RS	GEZ 204 ES-2RS
GEZ 63 ES-2RS	B40-LSS	25 SF 40-TT	SBB 40-2RS	GEZ 208 ES-2RS
GEZ 69 ES-2RS	B44-LSS	27 SF 44-TT	SBB 44-2RS	GEZ 212 ES-2RS
GEZ 76 ES-2RS	B48-LSS	30 SF 48-TT	SBB 48-2RS	GEZ 300 ES-2RS
GEZ 82 ES-2RS	B52-LSS	32 SF 52-TT	SBB 52-2RS	GEZ 304 ES-2RS
GEZ 88 ES-2RS	B56-LSS	35 SF 56-TT	SBB 56-2RS	GEZ 308 ES-2RS
GEZ 95 ES-2RS	B60-LSS	37 SF 60-TT	SBB 60-2RS	GEZ 312 ES-2RS
GEZ 101 ES-2RS	B64-LSS	40 SF 64-TT	SBB 64-2RS	GEZ 400 ES-2RS
GEZ 114 ES-2RS	B72-LSS	45 SF 72-TT	SBB 72-2RS	GEZ 408 ES-2RS
GEZ 127 ES-2RS	B80-LSS	50 SF 80-TT	SBB 80-2RS	GEZ 500 ES-2RS
GEZ 152 ES-2RS	B96-LSS	60 SF 96-TT	SBB 96-2RS	GEZ 600 ES-2RS

These cross-references are an approximation and should be used for pricing purposes only. Please locate the corresponding Newin Co. number; then consult the previous pages to determine if the proper dimensional characters are correct.

We make no claim these bearings are interchangeable. This reference guide should be used for quotation purposes only.